

## Advanced High Viscosity (AHV) with Lidocaine



Manufacturer:

60 Granton Dr., Suite 105  
Richmond Hill, Ontario,  
Canada L4B 2N6  
Tel: 416 410 3900  
Fax: 416 238 4944  
Toll Free: 1 866.936.1818  
info@recosmo.com  
www.recosmo.com

*Essederm*®  
Cross linked Hyaluronic Acid  
FAMILY OF PRODUCTS  


## Company info:

**ReCosmo** is a combination of researchers, directors, doctors & manufacturers, with years of experience in the medical aesthetic industry from around the world. Our talented and innovative groups continuously study, design and develop new products & are currently developing cutting edge products for the aesthetic market.

**ReCosmo** is involved in innovative designing manufacturing and distributing a full range of Medical cosmetic for this highly regulated industry. Our number one objective is to manufacture and offer high quality products without any compromise.



**Essederm®**

## What is hyaluronic acid and *Essederm* ?

Hyaluronic acid is a complex sugar of glucuronic acid & N acetyl glucosamine found in the human body cell. The concentration of hyaluronic acid in human body is about 50%.

### The function of hyaluronic acid is as follow:

- Moisture regulation
- Fibroblast activity increase
- Collagen synthesis stimulation
- Binding free radical
- Serves as diffusion medium for degradation products and nutrients

Young skin look fresh, firm and smooth due to high concentration of natural hyaluronic acid. By aging the presence of hyaluronic acid declines and body loses its elasticity, firmness, moisture and volume. Skin aging signs are wrinkles, folds, loss of volume around the face. Cross linked products are made from natural and non-genetically modified bacterial stem which is high in molecular weight. It is proven use of *Essederm* is highly effective and well-tolerated. The technology used to produce *Essederm* is the latest and it is a breakthrough in dermal fillers. It is a monophasic with CVH (Constant Visco-elastic Hyaluronic acid) technology, which make the injection much easier. *Essederm* has the highest concentration of cross link compare to other cross linked products. Our Cross linking makes the volume of cross linked concentration between 70 to 90% compare to 1 to 20%.

The highly concentrated and cross-linked hyaluronic acid, which has a significantly higher viscosity compared to the initial mixture, is subsequently made into particles and stabilized, to facilitate the filling of the syringes without the need for any dilution.

Particularisation of the strong cross linked HA-gel mass and homogenisation without dilution in order to get a high visco-elastic and easy injectable final product.

In the cross-linked sodium hyaluronate, the hydroxyl groups of the disaccharide from D-glucuronic acid and N-acetyl-D-glucosamine are cross-linked to each other by sulfonyl - to ethyl bridges. Sodium hyaluronate and divinyl sulfone form a continuous network and an aqueous gel during the reaction.

**Essederm®**

## Biodegradable, Natural & Safe:

All our Esthetics products are biodegradable. However our extremely effective stabilization method makes it possible to maintain more volume with less material over a longer period of time. As *Esseder* gel is degraded, each molecule progressively binds more water (more free water-binding sites per molecule). This is known as isovolemic degradation. In practical terms it means that the implant volume is maintained until the hyaluronic acid is almost fully degraded. Since the body has its own system for absorbing hyaluronic acid, it disappears over time without trace.

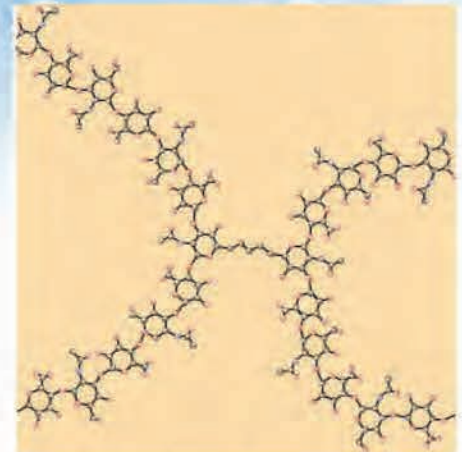


Initial

at 6 months

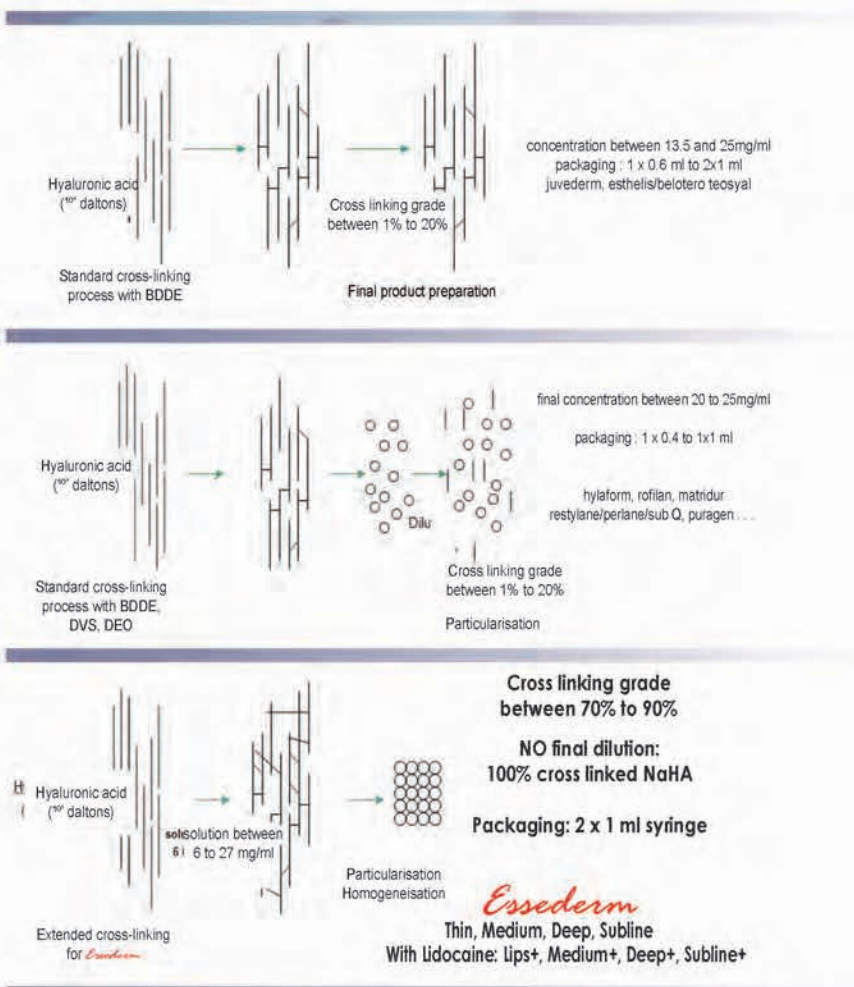
at 12 months

The products are isovolemicly degraded because they can hold more water the less concentrated they are.



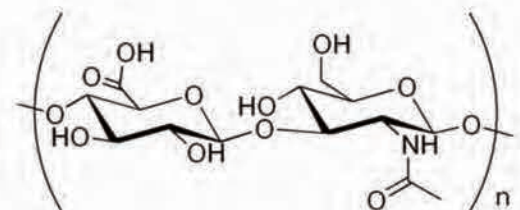
The stabilized material is a continuous 3-dimensional molecular network i.e. a true gel in any shape and form.

## Comparison Chart:



## Why *Esseder* is so different and better?

- 4 times more cross linked as other fillers
- Esseder* is 100% cross-linked hyaluronic acid is the first and only soft-tissue filler with this characteristic
- From 6 mg/ml to 27 mg/ml cross linking is the specification of the "density" of the final cross-linked hyaluronic acid
- No solvent, no anesthetics nor preservatives added
- Excellent volume effect without overcorrection
- Natural aesthetic results
- Easy to inject without pre-testing with 27G needles
- Less re-injections needed to continue the clinical results
- Storable at room temperature



### *Essederm* performance:

The *Essederm* products are easy to apply, accompanied by very mild pain, very safe and effective means to provide the skin with volume and improve contour irregularities associated with age. The follow-up after 9-12 months shows the long durability of the

*Essederm* products.

*Essederm* filler must be used for skin, according to the level of injection and the quantity is used.

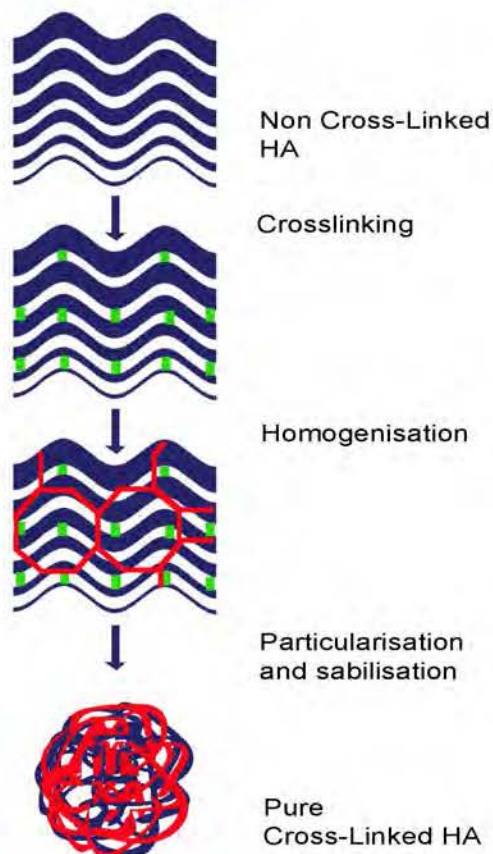
The application is easy to perform & it is pleasant to the patient. Small number of patient have reported immediate reaction and medium term side effect as redness, swelling and hardening which faded away within about 1-3 days. Swelling which was resolved within 8 to 14 days.

### **New generation of cross link hyaluronic acid filler:**

*Essederm* family of products is the newest dermal filler which is the first and only soft-tissue filler made of highly cross-linked and pure hyaluronic acid.

With this excellent innovation in the manufacturing stage, *Essederm* product line combines excellent viscoelastic properties which made it possible for easy injection and allows an exceptional long duration in the skin.

### *Essederm* product line manufacturing process:



*Essederm* contains Hyaluronic acid products which are obtained by biofermentation. There is no need for preliminary cutaneous test because it is non-animal origin. It is important to note that *Essederm* family of products contains neither anesthetics nor preservatives. The optimal concentration and overall high degree of cross linking is unique characteristics of *Essederm*.

### *Essederm* product line with long lasting results:

Due to a new manufacturing method resulting in highly cross-linked /highly concentrated hyaluronic acid with a high molecular weight that can resist degradation better with time. This characteristic allows not only to obtain optimal volume effect with less quantity but also slows down the degradation process. This unique characteristic, results in avoiding repeated and short time injections (which could be possible risks of complications) are no longer necessary.

### **Safe and effective:**

*Essederm* is a new generation of dermal filler, which sets higher standard in the market of cross link hyaluronic acid.

ReCosmo Inc, with the technology used to manufacture *Essederm* family of products based on research and development of the product is enjoying a great success. The *Essederm* family of products manufactures under strict quality controls to meet and surpass international standards.

### *Essederm* with its unique long lasting characteristics:

Hyaluronic acid (glycosaminoglycane) has the characteristic to adopt much stretched conformations, which can create volume much greater than its mass. With its strong density of negative charges attracts a cloud of cations, like Na<sup>+</sup> causing the absorption of great quantities of water molecules in the matrix, which creates an osmotic pressure, or turgescence, which makes it possible for the matrix to resist compressive forces.

*Essederm* is a nanotechnology that allows higher encapsulation of the active ingredients in a smaller molecule; this allows deeper penetration in the skin and more effective results.

As a result the degradation process is slowed considerably because *Essederm* has a high molecular weight and highly cross-linked. With its precisely adjusted concentration repeated and short time injections (which could be possible risks of complications) are no longer necessary.

*Essederm*®

# FAQ

## How long the treatment last?

The high degree of cross-linking supports a slower degradation of *Essederm* products in the tissue therefore *Essederm* products persist at least 6 to 12 months. The durability in the skin varies according to skin type, age and the way of life of the patient as well as treated area and injection technique. It can be necessary to renew the treatment partially in order to optimize the results and durability of the correction.

## Who should not use Essederm?

*Essederm* products should not be used on pregnant woman or breast feeding, patients presenting an auto-immune disease, antecedents of allergy or over-sensitiveness to the hyaluronic acid, or an immune-therapeutic treatment also *Essederm* products should not be injected into inflammatory and/or infectious skin (acne, herpes, impetigo...), a tendency to develop hypertrophic scars.

It should not be used in conjunction with any laser treatment, chemical peeling or dermabrasion.

A prior consultation of the patient is necessary to know the medical history, especially aesthetic treatments (like prior injections) and to determine if *Essederm* products are suitable. For more information please refer to the packaging insert of *Essederm* products.

## Are there any adverse effects?

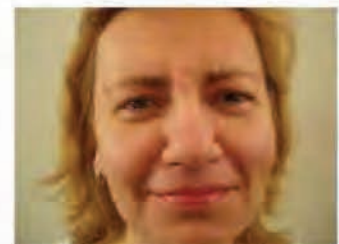
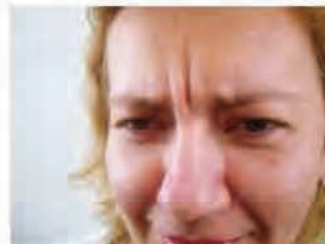
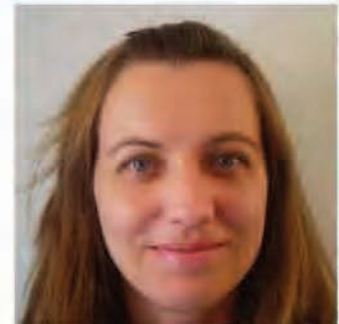
As with all skin fillers swelling and/or redness, with or without associated pain, may occur after the injection. These generally disappear within a few hours, days or in some cases within a week. Some rare cases of necrosis, abscess, granuloma or of over-sensitivity were described in the scientific literature after injections of hyaluronic acid.

Continuation of these reactions or appearance of any other side effects must be reported to the practitioner as soon as possible in order to resolve it by appropriate treatment. The distributor should also be informed about this incident. Before treatment, please inform your patient about the potential side effects related to this injectable implant.

Before



After



**Essederm®**  
Cross linked Hyaluronic Acid

Essederm®

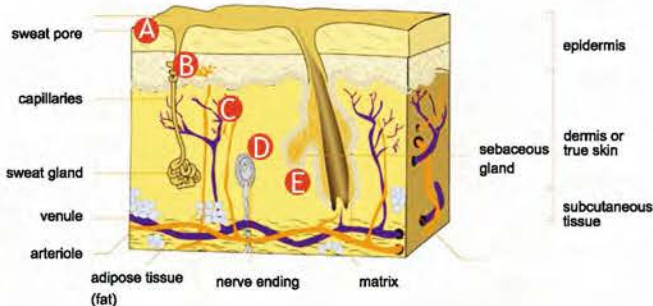
PRINTED IN CANADA

1. Worry Lines, Essederm **Medium+**
2. Glabellar Lines, Essederm **Medium+**
4. Augmentation of Chickbones, Essederm **Medium+**, **Deep+**, **Subline+**
5. Cheek Augmentation / Cheek Wrinkles, Essederm **Medium+**, **Deep+**, **Subline+**
6. Nasolabial Folds, Essederm **Medium+**, **Deep+**, **Subline+**
8. Vermilion Border, Essederm **Medium+**
9. Oral Commissurer / Smile Lines, Essederm **Medium+**, **Deep+**
10. Lip Contour, Essederm **Lips+**, **Medium+**
11. Lip Augmentation, Essederm **Lips+**
12. Chin Augmentation, Essederm **Medium+**, **Deep+**, **Subline+**



# Essederm®

Family of products



The highest concentration of cross link  
70%-90% (Up to 4 times higher than others)  
Each package contains 2 x 1.0 ml syringes

Essederm	Concentration	Needle size	Indications	Skin level injection area
<b>Lips+</b> Lidocaine	20 mg/ml	27 G	Red part of the lips upper & lower	Superficial Dermis A
<b>Thin</b>	30 mg/ml	27 G	Superficial Wrinkles Crow's feet Perioral lines Red part of the lips upper & lower	Superficial Dermis A
<b>Medium</b>	12 mg/ml	27 G	Medium and Deep Wrinkles	Middle and Deep Dermis
<b>Medium+</b> Lidocaine	20 mg/ml	27 G	In all areas Lip contours	B & C
<b>Deep</b>	18 mg/ml	27 G	Deep Wrinkles Contour of the face Volume creation	Deep Dermis or Subcutis
<b>Deep+</b> Lidocaine	20 mg/ml	27 G		C & D
<b>Subline</b>	27 mg/ml	27 G	Specially Contour Of the face	Subcutis and Epiperiostal
<b>Subline+</b> Lidocaine	20 mg/ml	27 G	Very Deep Wrinkles Volume creation	E

Injection technique based on the indications: Retrotracing, Criss Cross, Multiple Point and Fan Technique



Essederm®

Lips+  
Lidocaine

Lidocaine  
**Essederm® Lips+**

Is a Sterile restorable cross-linked pyrogen free hyaluronic acid gel of non-animal origin which is used for:  
Filling superficial wrinkles (perioral, periorbital...),  
Augmentation of lip and injection in lip contour

- \* 1.0 ml cross link hyaluronic acid
- \* 27G disposable needle & glass syringe
- \* It is sterile pyrogen free, colorless, isotonic gels, transparent, odorless, viscous, no particle and 100% none animal base
- \* Cross linked NaHA content 20 mg per ml
- \* Not cross linked NaHA content .8 to 1.2 mg per ml
- \* BDDE Cross linking grade: 70 to 90 %
- \* With Lidocaine (0.3%) for added patient comfort
- \* Bacterial endotoxin: < 20 EU per implant
- \* Volume: 1.01 – 1.16 g
- \* Storage and condition: 2 to 25 C. (35 to 77 F)

Lidocaine Lips+  
**Essederm®**  
Family of products

*Essederm*

®

Lips+  
Lidocaine

10 ✓  
11 ✓

10. Lip Contour, Essederm Lips+  
11. Lip Augmentation, Essederm Lips+



PRINTED IN CANADA



# Essederm<sup>®</sup>

Medium+  
Lidocaine

**Essederm<sup>®</sup>** Lidocaine Medium+

Is a Sterile restorable cross-linked pyrogen free hyaluronic acid gel of non-animal origin which is used for: Filling medium and deep cutaneous depressions such as wrinkles, folds and other defects, restoring or creating volume in facial contours (cheekbones, chin) and lip contours

- \* 1.0 ml cross link hyaluronic acid
- \* 27G disposable needle & glass syringe
- \* It is sterile pyrogen free, colorless, isotonic gels, transparent, odorless, viscous, no particle and 100% none animal base.
- \* Cross linked NaHA content 20 mg per ml
- \* Not cross linked NaHA content .8 to 1.2 mg per ml
- \* BDDE Cross linking grade: 70 to 90 %
- \* With Lidocaine (0.3%) for added patient comfort
- \* Bacterial endotoxin: < 20 EU per implant
- \* Volume: 1.01 – 1.16 g
- \* Storage and condition: 2 to 25 C (35 to 77 F)

Lidocaine Medium+  
**Essederm<sup>®</sup>**  
Family of products

# Essederm®

Medium+  
Lidocaine

PRINTED IN CANADA

1. Worry Lines, Essederm Medium+
2. Glabellar Lines, Essederm Medium+
4. Augmentation of Chickbones, Essederm Medium+
5. Cheek Augmentation / Cheek Wrinkles, Essederm Medium+
6. Nasolabial Folds, Essederm Medium+
8. Vermillion Border, Essederm Medium+
9. Oral Commissurer / Smile Lines, Essederm Medium+
10. Lip Contour, Essederm Medium+
12. Chin Augmentation, Essederm Medium+





Essederm®

Deep+  
Lidocaine

Lidocaine  
**Essederm®** Deep+

Is a Sterile restorable cross-linked pyrogen free hyaluronic acid gel of non-animal origin which is used for: deep cutaneous depressions like deep wrinkles, folds and other defects, restoring or creating volume in facial contours (cheekbones, chin)

- \* 1.0 ml cross link hyaluronic acid
- \* 27G disposable needle & glass syringe
- \* It is sterile pyrogen free, colorless, isotonic gels, transparent, odorless, viscous, no particle and 100% none animal base
- \* Cross linked NaHA content 20 mg per ml
- \* Not cross linked NaHA content .8 to 1.2 mg per ml
- \* BDDE Cross linking grade: 70 to 90 %
- \* With Lidocaine (0.3%) for added patient comfort
- \* Bacterial endotoxin: < 20 EU per implant
- \* Volume: 1.01 – 1.16 g
- \* Storage and condition: 2 to 25 C (35 to 77 F)

Lidocaine Deep+  
**Essederm®**  
Family of products

PRINTED IN CANADA

*Essederm*®

Deep+  
Lidocaine

- 4. Augmentation of Chickbones, Essederm Deep+
- 5. Cheek Augmentation / Cheek Wrinkles, Essederm Deep+
- 6. Nasolabial Folds, Essederm Deep+
- 9. Oral Commissurer / Smile Lines, Essederm Deep+
- 12. Chin Augmentation, Essederm Deep+





Essederm<sup>®</sup>

Subline+  
Lidocaine

<sup>Lidocaine</sup>  
**Essederm<sup>®</sup>** Subline+

Is a Sterile restorable cross-linked pyrogen free hyaluronic acid gel of non-animal origin which is used for: deep skin deformations and depressions, increasing volume and contours of the face (chin, cheek bones), rhinoplasty and scar correction

- \* 1.0 ml cross link hyaluronic acid
- \* 27G disposable needle & glass syringe
- \* It is sterile pyrogen free, colorless, isotonic gels, transparent, odorless, viscous, no particle and 100% none animal base
- \* Cross linked NaHA content 20 mg per ml
- \* Not cross linked NaHA content .8 to 1.2 mg per ml
- \* BDDE Cross linking grade: 70 to 90 %
- \* With Lidocaine (0.3%) for added patient comfort
- \* Bacterial endotoxin: < 20 EU per implant
- \* Volume: 1.01 – 1.16 g
- \* Storage and condition: 2 to 25 C (35 to 77 F)

<sup>Lidocaine</sup> Subline+  
**Essederm<sup>®</sup>**  
Family of products

Essederm®

Subline+  
Lidocaine

PRINTED IN CANADA

- 4. Augmentation of Chickbones, Essederm Subline+
- 5. Cheek Augmentation / Cheek Wrinkles, Essederm Subline+
- 6. Nasolabial Folds, Essederm Subline+

12. Chin Augmentation, Essederm Subline+

